



**29 Thomas Mead, Chippenham, SN15 3YS**

**£237,500**

This well presented middle terrace home situated on the Pewsham Estate is located 1 miles walk from the High Street. Offered for sale with NO ONWARD CHAIN it comprises; entrance hall, kitchen, lounge/dining room with patio doors opening on to the Westerly facing private garden, two bedrooms and bathroom. There are two side by side parking spaces located to the left of the home. A perfect first time buy.

## Thomas Mead

The hallway offers under stairs storage, stairs to the first floor and doors to both lounge and kitchen.

The kitchen has a double glazed window to the front looking out in to the cul de sac, tiled floor and range of floor and wall mounted units with electric hob, electric oven, extractor fan, plumbing for a washing machine and space for a fridge/freezer.

The lounge/dining room at the rear of the home has laminate flooring, radiator and patio doors the lead in to the garden. There is space for seating as well as a dining table and chairs if required.

On the first floor bedroom one is a double room at the rear and bedroom two a good single at the front with two fitted cupboards. In the middle of the two is the bathroom comprising; wash hand basin, towel radiator, toilet and bath with shower over.

The Westerly facing rear garden is laid to areas of patio and lawn with further shingle seating area, garden shed and gated access to the two parking spaces.

Offered for sale with no onward chain, this well located and well presented terrace home is a great option.

## Hallway



## Kitchen



## Lounge/Dining Room

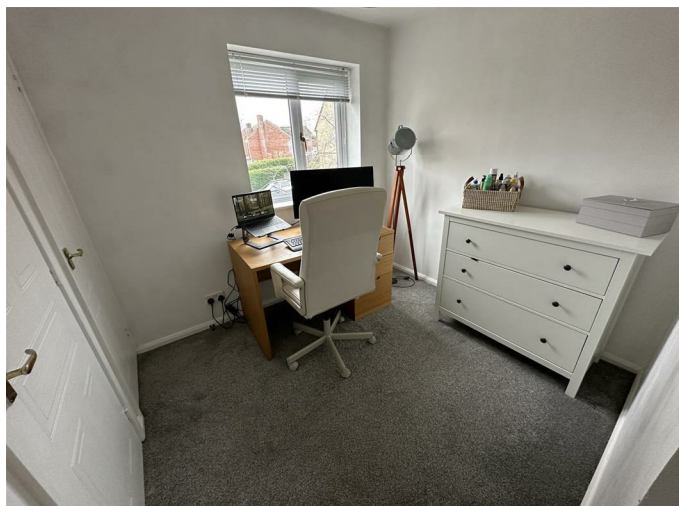


## Landing

## Bedroom One



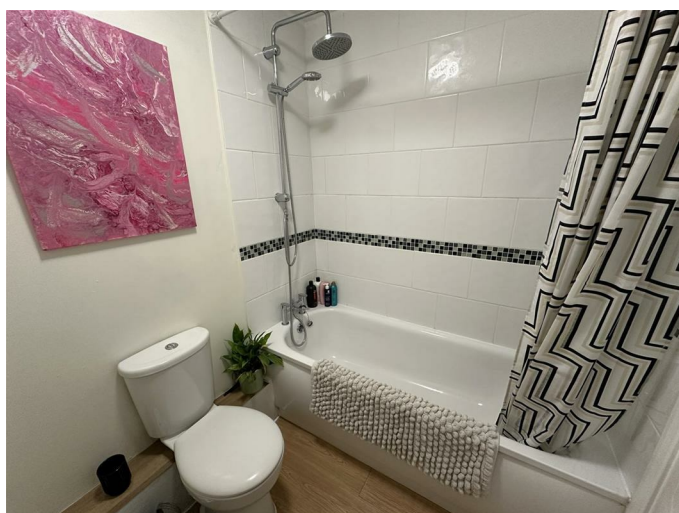
## Bedroom Two



## Rear Garden



## Bathroom



## Allocated Parking Spaces

### Tenure

We are advised by the .gov website that the property is Freehold.

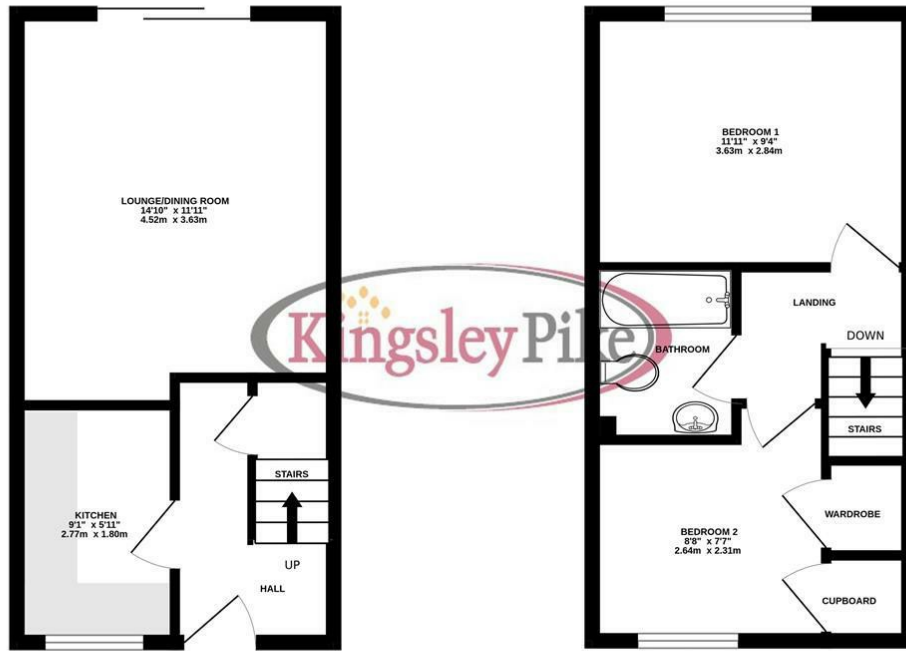
### Council Tax

We are advised by the .gov website that the property is band B.

# Floor Plan

GROUND FLOOR  
290 sq.ft. (26.9 sq.m.) approx.

1ST FLOOR  
290 sq.ft. (26.9 sq.m.) approx.



2 BEDROOM TERRACE HOUSE

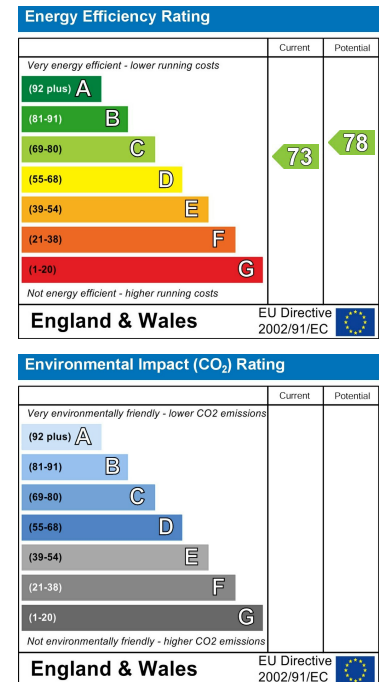
TOTAL FLOOR AREA: 580 sq.ft. (53.9 sq.m.) approx.

Whilst every attempt has been made to ensure the accuracy of the floorplan contained here, measurements of doors, windows, rooms and any other items are approximate and no responsibility is taken for any error, omission or mis-statement. This plan is for illustrative purposes only and should be used as such by any prospective purchaser. The services, systems and appliances shown have not been tested and no guarantee as to their operability or efficiency can be given.  
Made with Metropix ©2026

# Area Map



# Energy Efficiency Graph



These particulars, whilst believed to be accurate are set out as a general outline only for guidance and do not constitute any part of an offer or contract. Intending purchasers should not rely on them as statements of representation of fact, but must satisfy themselves by inspection or otherwise as to their accuracy. No person in this firm's employment has the authority to make or give any representation or warranty in respect of the property.